

Exam Questions 352-001

CCDE Written Exam

<https://www.2passeasy.com/dumps/352-001/>



NEW QUESTION 1

What are two benefits of following a structured hierarchical and modular design? (Choose two.)

- A. Each component can be designed independently for its role.
- B. Each component can be managed independently based on its role.
- C. Each component can be funded by different organizations based on its role.
- D. Each component can support multiple roles based on the requirements.
- E. Each component can provide redundancy for applications and services.

Answer: AB

NEW QUESTION 2

Which IEEE standard is commonly used at the data link layer for an access network, in an IoT environment?

- A. Wireless Regional Area Network
- B. Low-Rate Wireless Network
- C. Wireless Local Area Network
- D. Broadband wireless metropolitan Network

Answer: B

NEW QUESTION 3

Which statement about TAP and TUN devices, which are used in a Linux/KVM cloud deployment model, is true?

- A. TUN is for handling IP packets, but TAP is for handling Ethernet frames
- B. TUN is for handling Ethernet frames, but TAP is for handling IP packets
- C. TUN is for tunneling IP packets, but TAP is for tapping IP packets
- D. TUN is for tunneling Ethernet frames, but TAP is for tapping Ethernet frames

Answer: A

NEW QUESTION 4

In which two ways is a network design improved by including IP Event Dampening? (Choose two)

- A. Provides sub-second convergence
- B. Quickly detects network failures
- C. Prevent routing loops
- D. Improves network stability
- E. Reduces processing load

Answer: DE

NEW QUESTION 5

Which mechanism provides fast path failure detection?

- A. Non-Stop Forwarding
- B. Carrier delay
- C. Graceful restart
- D. UDLD
- E. Fast hello packets
- F. iSPF

Answer: E

NEW QUESTION 6

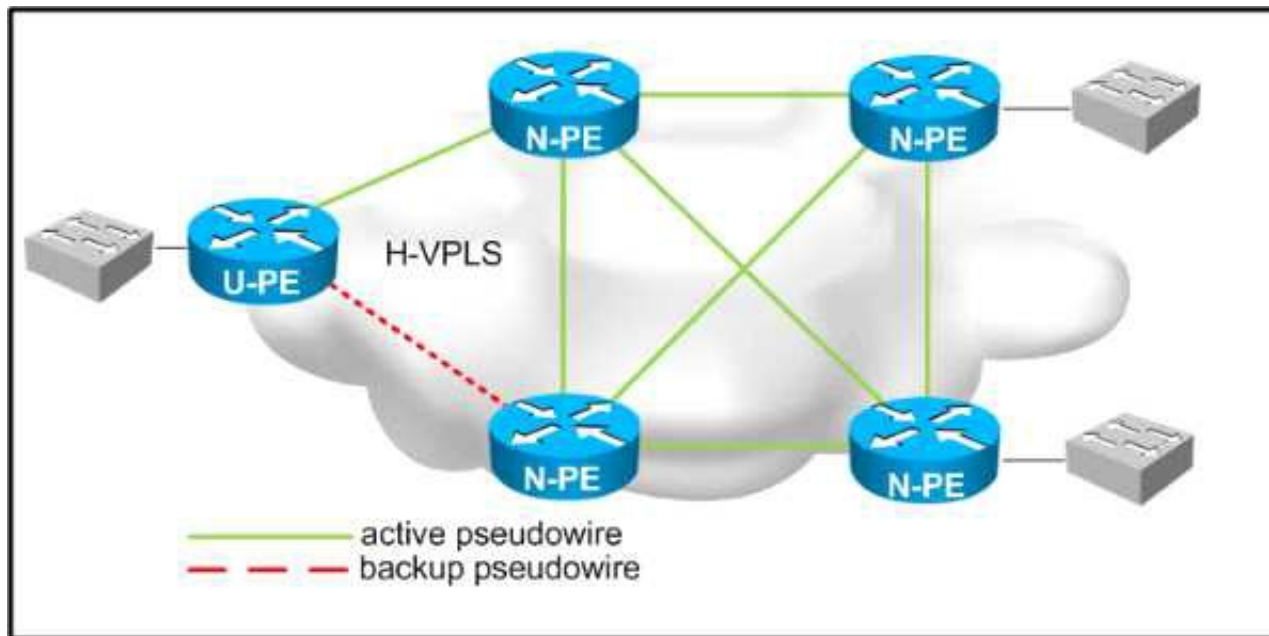
There is an MPLS-enabled link constantly flapping on an MPLS VPN network. Given that the network runs OSPF as the IGP protocol, which design mechanism will stabilize the network and avoid constant re-convergence?

- A. IP Event Dampening
- B. OSPF fast hellos
- C. IP SLA
- D. Partial SPF

Answer: A

NEW QUESTION 7

Refer to the exhibit,



Which two design considerations should be implemented on the pseudowire between N-PE and U-PE routers for a loop-free hierarchical VPLS service? (Choose two)

- A. Disable split horizon towards the U-PE router.
- B. Disable MAC learning on the U-PE router.
- C. Enable split horizon towards the N-PE routers.
- D. Disable MAC learning on the U-PE routers.
- E. Disable MAC learning on the U-PE routers.
- F. Enable split horizon towards the U-PE routers.
- G. Disable split horizon toward the N-PE routers.

Answer: AC

NEW QUESTION 8

ACME Agricultural requires that access to all network devices is granted based on identify validation, and an authentication server was installed for this purpose. Currently the network team uses a list of passwords based on regions to access the internal corporate network devices. Which protocol do you recommend to ensure identify validation from the authentication server to the corporate directory?

- A. HTTPS
- B. TACACS+
- C. SSH
- D. LDAP

Answer: D

NEW QUESTION 9

When designing a network .Which method can be used to control the exit point for traffic an autonomous system, at the layer 3 control plane?

- A. Prepending AS path.
- B. Tuning the multi-exit discriminator.
- C. Setting the site of Origin extended community.
- D. Tuning the metric of the under-tying IGP.

Answer: D

NEW QUESTION 10

Which two general SDN characteristics? (Choose two)

- A. Southbound interfaces are interfaces used between the control plane and the date plane
- B. OpenFlow is considered one of the first Northbound APIs used by SDN controllers
- C. Northbound interfaces are open interfaces used between the control plane and the data plane
- D. The separation of the control plane from the data plane
- E. OVSDB is an application database management protocol

Answer: AD

NEW QUESTION 11

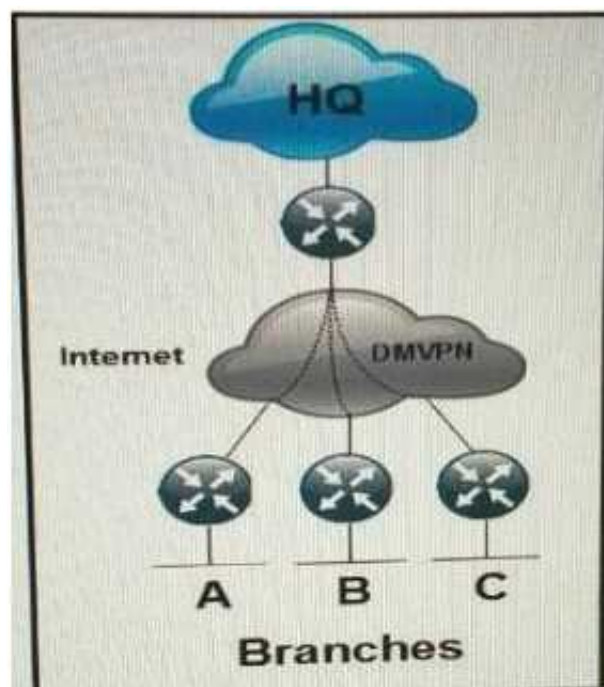
You are designing a solution to connect a primary data center to a disaster recovery site, The hosted applications will be web and email servers that are provided through a virtualized environment. Which connectivity technology should you consider for this design?

- A. L2TPV3.
- B. VPWS.
- C. Point-To-Point GRE tunnels.
- D. VPLS.

Answer: A

NEW QUESTION 12

Refer to the exhibit.



Which routing solution is the most scalable to connect the branches to the HQ and to connect the branches together over the internet using DMVPN?

- A. EIGRP
- B. EIGRP with the branch routers setup as stubs
- C. OSPF with each branch router as an ABR
- D. IS-IS L2 in all locations
- E. OSPF Area 0 in all locations

Answer: B

NEW QUESTION 13

You are hired to assist an enterprise customer to design their global WAN network. A protected DWDM circuit with disjoint fiber routes and guaranteed restoration times is ordered to connect two hub sites. Which option is a BFD design consideration in relation to protected DWDM?

- A. BFD failure detection must be faster than DWDM restoration time
- B. The BFD hello timer must match the DWDM circuit restoration time
- C. BFD failure detection must be longer than DWDM restoration time
- D. BFD cannot be used with protected DWDM

Answer: C

NEW QUESTION 14

DRAG DROP

An enterprise customer has a national WAN network based on DMVPN over the Internet, with sites located throughout the country. The customer has recently deployed VoIP throughout the entire network, and users report that it takes up to 2 seconds to establish a telephone call to an IP telephone at another office network. Drag and drop the root cause and the corresponding design solution from the left onto the correct targets on the right. Not all options are used.

The screenshot shows a drag-and-drop interface. On the left, there are ten light blue boxes with the following text:

- VoIP is not supported over the Internet.
- DMVPN spoke-to-spoke tunnels take a few seconds to establish the encryption.
- DMVPN does not support per-tunnel QoS.
- The network is using DMVPN Phase 2.
- Replace DMVPN on the WAN with Layer 3 VPN.
- Replace DMVPNs on the WAN with an ELAN solution.
- Use DMVPN to set up the tunnels and GETVPN inside the tunnels to maintain the encryption.
- Per-tunnel QoS must be enabled at the DMVPN hub site.
- Migrate from DMVPN Phase 2 to DMVPN Phase 3.

On the right, there are two yellow boxes:

- Root Cause
- Corresponding Solution

- A. Mastered
- B. Not Mastered

Answer: A

Explanation:

DMVPN spoke to spoke tunnels take a few second
 Use DMVPN to set up tunnels and GETVPN for encryption

NEW QUESTION 15

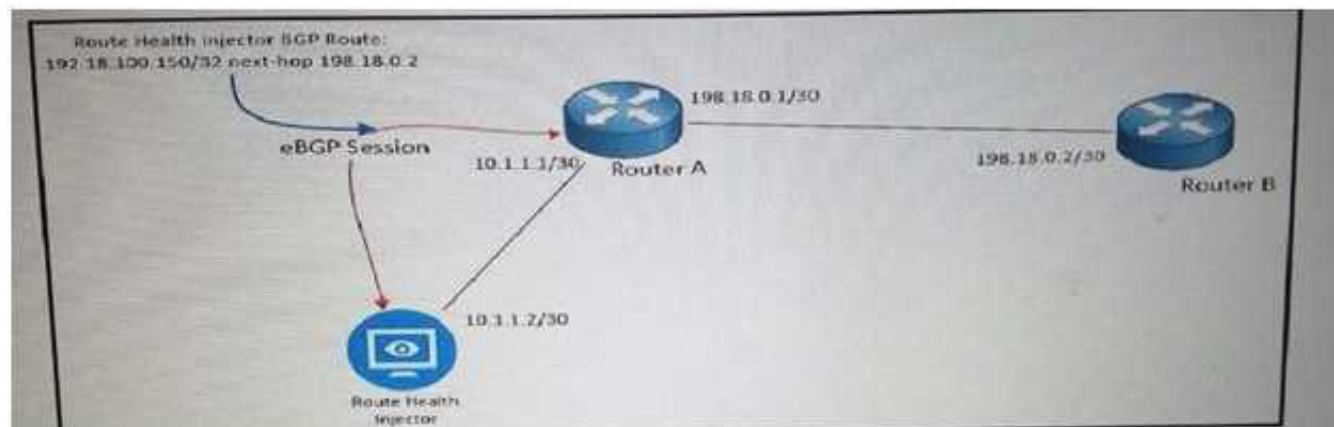
Which two options are two advantages of summarizing networks at the aggregation layer rather than at the core? (Choose two.)

- A. It prevents the core from having unnecessary routes.
- B. It no longer needs a core layer.
- C. It prevents black hole routing.
- D. It avoids network-wide impact upon VLAN changes local to the aggregation devices.
- E. it allows for optimal routing

Answer: AD

NEW QUESTION 16

Refer to the exhibit.



As part of your design to monitor reachable services, a route health injector has just been deployed on the network. The route health injector injects /32 host routes into BGP with the next hop of 192.18.0.2, but the /32 routes are not being installed into the RIB or FIB of Router

- A. Which BGP feature must be deployed to make be deployed to make the design to work?
- B. BGP community attributes
- C. MP-BGP
- D. BGP AS-Path prepending
- E. eBGP multihop attribute

Answer: A

NEW QUESTION 17

Which two IoT use cases require the low latency and high reliability that 5G networks provide?

- A. Smart Home
- B. Automotive
- C. Health and Wellness
- D. Smart Cities
- E. Sports and Fitness

Answer: BC

NEW QUESTION 18

A network has several routers running IS-IS L1L2 mode on the same Ethernet segment. Which action reduces to a minimum the number of IS-IS adjacencies in this segment?

- A. Define only the router on the segment to be DIS
- B. Change all routers connected to this segment to a single-level area
- C. Make the interface priority on the backup DIS lower than the primary DIS
- D. Change half the routers to be L1-only and other half to be L2-only on this segment

Answer: B

NEW QUESTION 19

A service provider must provide Internet connectivity to an MPLS Layer 3 VPN customer. Which solution allows this customer to have Internet access?

- A. Implement a global default route with a next hop in the VRF late on PE
- B. Implement policy-based routing between PE and CE
- C. Implement a default route in the VRF with a next hop in the global routing table of PE
- D. Implement destination NAT between the VRF and the global RIB of PE

Answer: C

NEW QUESTION 20

When a multiprotocol routing environment is designed to have several routers redistributing among the routing domains, how can routing loops be avoided?

- A. By implementing spanning tree
- B. By activating split horizon
- C. By using the AS-path attribute
- D. By using route tags

Answer: D

NEW QUESTION 21

.....

THANKS FOR TRYING THE DEMO OF OUR PRODUCT

Visit Our Site to Purchase the Full Set of Actual 352-001 Exam Questions With Answers.

We Also Provide Practice Exam Software That Simulates Real Exam Environment And Has Many Self-Assessment Features. Order the 352-001 Product From:

<https://www.2passeasy.com/dumps/352-001/>

Money Back Guarantee

352-001 Practice Exam Features:

- * 352-001 Questions and Answers Updated Frequently
- * 352-001 Practice Questions Verified by Expert Senior Certified Staff
- * 352-001 Most Realistic Questions that Guarantee you a Pass on Your FirstTry
- * 352-001 Practice Test Questions in Multiple Choice Formats and Updatesfor 1 Year