

## Exam Questions 300-115

SWITCH Implementing Cisco IP Switched Networks

<https://www.2passeasy.com/dumps/300-115/>



**NEW QUESTION 1**

- (Exam Topic 1)

Refer to the exhibit.

```

SW1#show etherchannel summary
Flags: D - down P - in port-channel
I - stand-alone s - suspended
H - Hot-standby (LACP only)
R - Layer3 S - Layer2
U - in use f - failed to allocate aggregator
u - unsuitable for bundling
w - waiting to be aggregated
d - default port
Number of channel-groups in use: 3
Number of aggregators: 3
Group  Port-channel  Protocol    Ports
-----+-----+-----+-----
12     Po12 (SU)        -           Fa0/13(P) Fa0/14(P) Fa0/15(P)
13     Po13 (SU)        -           Fa0/16(P) Fa0/17(P) Fa0/18(P)
14     Po14 (SU)        -           Fa0/19(P) Fa0/20(P) Fa0/21(P)

SW1#show interface trunk
Port Mode Encapsulation Status Native vlan
Po12 desirable n-isl trunking 1
Po13 desirable n-isl trunking 1
Po14 desirable n-isl trunking 1
Port Vlans allowed on trunk
Po12 1-4094
Po13 1-4094
Po14 1-4094
    
```

Which EtherChannel negotiation protocol is configured on the interface f0/13 – f0/15?

- A. Link Combination Control Protocol
- B. Port Aggregation Protocol
- C. Port Combination Protocol
- D. Link Aggregation Control Protocol

**Answer: B**

**NEW QUESTION 2**

- (Exam Topic 1)

You have been tasked with configuring multilayer SwitchC, which has a partial configuration and has been attached to RouterC as shown in the topology diagram.

You need to configure SwitchC so that Hosts H1 and H2 can successfully ping the server S1. Also SwitchC needs to be able to ping server S1.

Due to administrative restrictions and requirements you should not add/delete vlans or create trunk links. Company policies forbid the use of static or default routing. All routes must be learned via EIGRP 65010 routing protocol.

You do not have access to RouterC. RouterC is correctly configured. No trunking has been configured on RouterC.

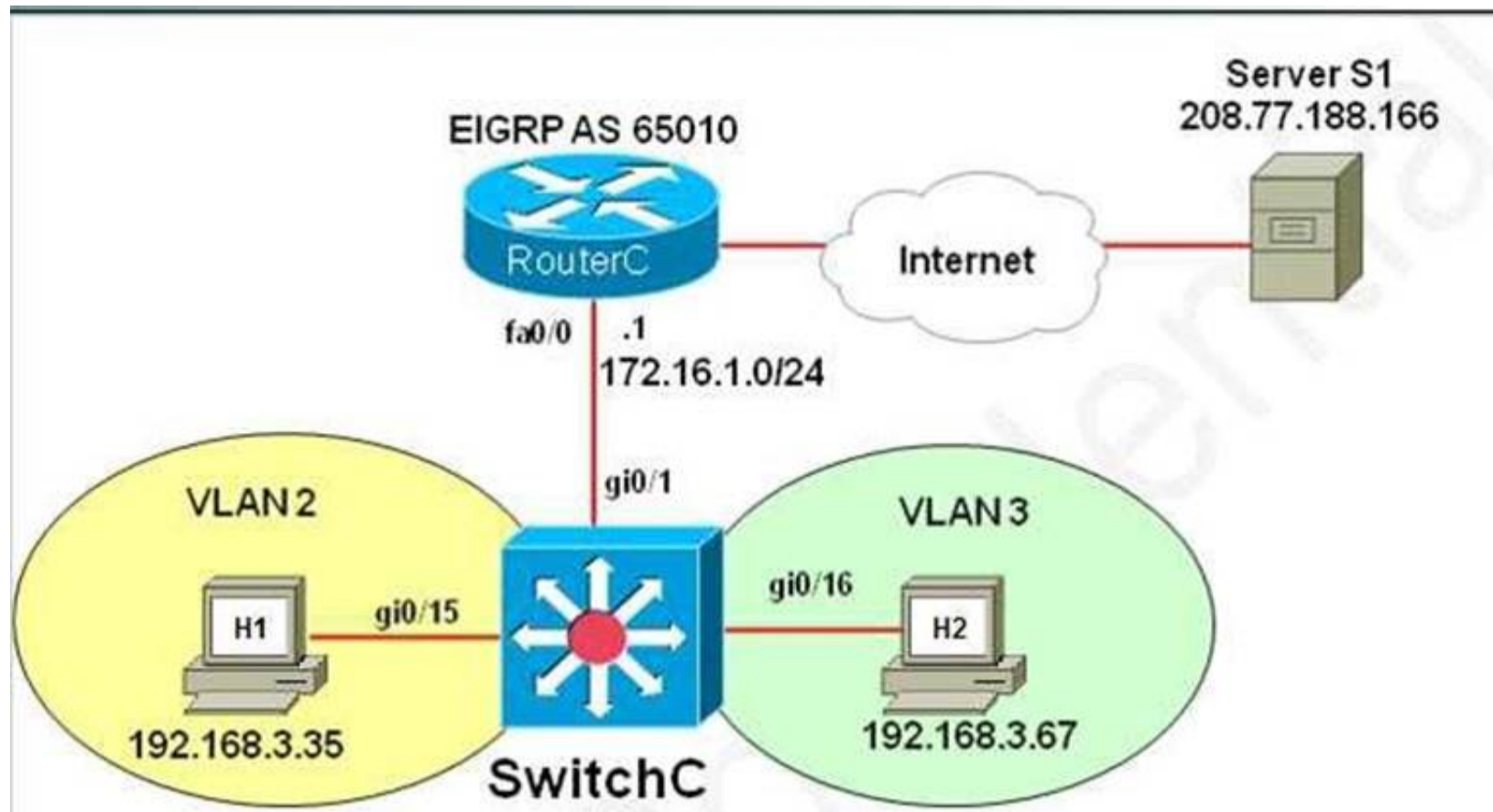
Routed interfaces should use the lowest host on a subnet when possible. The following subnets are available to implement this solution:

- 10.10.10.0/24
- 190.200.250.32/27
- 190.200.250.64/27

Hosts H1 and H2 are configured with the correct IP address and default gateway. SwitchC uses Cisco as the enable password.

Routing must only be enabled for the specific subnets shown in the diagram.

Note: Due to administrative restrictions and requirements you should not add or delete VLANs, changes VLAN port assignments or create trunks. Company policies forbid the use of static or default routing. All routes must be learned via the EIGRP routing protocol.



H1

Press RETURN to get started!  
C:\>

H2

Press RETURN to get started!  
C:\>

```
SwitchC
%LINK-3-UPDOWN: Interface GigabitEthernet0/22, changed state to administratively
down
%LINK-3-UPDOWN: Interface GigabitEthernet0/23, changed state to administratively
down
%LINK-3-UPDOWN: Interface GigabitEthernet0/24, changed state to administratively
down
%LINK-3-UPDOWN: Interface GigabitEthernet0/25, changed state to administratively
down
%LINK-3-UPDOWN: Interface GigabitEthernet0/26, changed state to administratively
down
%LINK-3-UPDOWN: Interface GigabitEthernet0/27, changed state to administratively
down
%LINK-3-UPDOWN: Interface GigabitEthernet0/28, changed state to administratively
down
%LINK-3-UPDOWN: Interface GigabitEthernet0/1, changed state to up
%LINEPROTO-5-UPDOWN: Line protocol on Interface GigabitEthernet0/1, changed stat
e to up
%LINK-3-UPDOWN: Interface GigabitEthernet0/16, changed state to up
%LINEPROTO-5-UPDOWN: Line protocol on Interface GigabitEthernet0/16, changed sta
te to up
%LINK-3-UPDOWN: Interface GigabitEthernet0/15, changed state to up
%LINEPROTO-5-UPDOWN: Line protocol on Interface GigabitEthernet0/15, changed sta
te to up
Press RETURN to get started!
SwitchC>
```

- A. Mastered
- B. Not Mastered

**Answer:** A

**Explanation:**

There are two ways to configure interVLAN routing in this case:

+ Use RouterC as a "router on a stick" and SwitchC as a pure Layer2 switch. Trunking must be established between RouterC and SwitchC.

+ Only use SwitchC for interVLAN routing without using RouterC, SwitchC should be configured as a Layer 3 switch (which supports ip routing function as a router). No trunking requires.

The question clearly states "No trunking has been configured on RouterC" so RouterC does not contribute to interVLAN routing of hosts H1 & H2 -> SwitchC must be configured as a Layer 3 switch with SVIs for interVLAN routing.

We should check the default gateways on H1 & H2. Click on H1 and H2 and type the "ipconfig" command to get their default gateways.

B. \>ipconfig

We will get the default gateways as follows:

Host1:

+ Default gateway: 190.200.250.33

Host2:

+ Default gateway: 190.200.250.65

Now we have enough information to configure SwitchC (notice the EIGRP AS in this case is 650)

Note: VLAN2 and VLAN3 were created and gi0/10, gi0/11 interfaces were configured as access ports so we don't need to configure them in this sim.

SwitchC# configure terminal

SwitchC(config)# int gi0/1

SwitchC(config-if)#no switchport

IP address on Gi0/1 interface.

-> without using this command, the simulator does not let you assign

SwitchC(config-if)#

ip address 10.10.10.2 255.255.255.0 ->RouterC has used IP 10.10.10.1 so this is the lowest usable IP address.

SwitchC(config-if)# no shutdown SwitchC(config-if)# exit SwitchC(config)# int vlan 2

SwitchC(config-if)# ip address 190.200.250.33 255.255.255.224

SwitchC(config-if)# no shutdown

SwitchC(config-if)# int vlan 3

SwitchC(config-if)# ip address 190.200.250.65 255.255.255.224

SwitchC(config-if)# no shutdown

SwitchC(config-if)#exit

SwitchC(config)#

ip routing (Notice: MLS will not work without this command)

SwitchC(config)# router eigrp 65010

SwitchC(config-router)# network 10.10.10.0 0.0.0.255

SwitchC(config-router)# network 190.200.250.32 0.0.0.31

SwitchC(config-router)# network 190.200.250.64 0.0.0.31

NOTE: THE ROUTER IS CORRECTLY CONFIGURED, so you will not miss within it in the exam, also don't modify/delete any port just do the above configuration. Also some reports said the "no auto-summary" command can't be used in the simulator, in fact it is not necessary because the network 190.200.0.0/16 is not used anywhere else in this topology.

In order to complete the lab, you should expect the ping to SERVER to succeed from the MLS, and from the PCs as well.

Also make sure you use the correct EIGRP AS number (in the configuration above it is 650 but it will change when you take the exam) but we are not allowed to access RouterC so the only way to find out the EIGRP AS is to look at the exhibit above. If you use wrong AS number, no neighbor relationship is formed between RouterC and SwitchC.

In fact, we are pretty sure instead of using two commands "network 190.200.250.32 0.0.0.31 and "network 190.200.250.64 0.0.0.31 we can use one simple

command "network 190.200.0.0 because it is the nature of distance vector routing protocol like EIGRP: only major networks need to be advertised; even without "no auto-summary" command the network still works correctly. But in the exam the sim is just a flash based simulator so we should use two above commands, just for sure. But after finishing the configuration, we can use "show run" command to verify, only the summarized network 190.200.0.0 is shown.

**NEW QUESTION 3**

- (Exam Topic 1)

Refer to the exhibit.

```
3512xl(config)#int fastEthernet 0/1
3512xl(config-if)#switchport mode trunk
3512xl(config-if)#switchport trunk encapsulation dot1q
```

How many bytes are added to each frame as a result of the configuration?

- A. 4-bytes except the native VLAN
- B. 8-bytes except the native VLAN
- C. 4-bytes including native VLAN
- D. 8-bytes including native VLAN

**Answer: A**

**NEW QUESTION 4**

- (Exam Topic 1)

For client server failover purposes, the application server team has indicated that they must not have the standard 30 second delay before their switchport enters a forwarding state. For their disaster recovery feature to operate successfully, they require the switchport to enter a forwarding state immediately. Which spanning-tree feature satisfies this requirement?

- A. Rapid Spanning-Tree
- B. Spanning-Tree Timers
- C. Spanning-Tree FastPort
- D. Spanning-Tree PortFast
- E. Spanning-Tree Fast Forward

**Answer: D**

**NEW QUESTION 5**

- (Exam Topic 1)

Which VLAN range is eligible to be pruned when a network engineer enables VTP pruning on a switch?

- A. VLANs 1-1001
- B. VLANs 1-4094
- C. VLANs 2-1001
- D. VLANs 2-4094

**Answer: C**

**NEW QUESTION 6**

- (Exam Topic 1)

Which VTP mode is needed to configure an extended VLAN, when a switch is configured to use VTP versions 1 or 2?

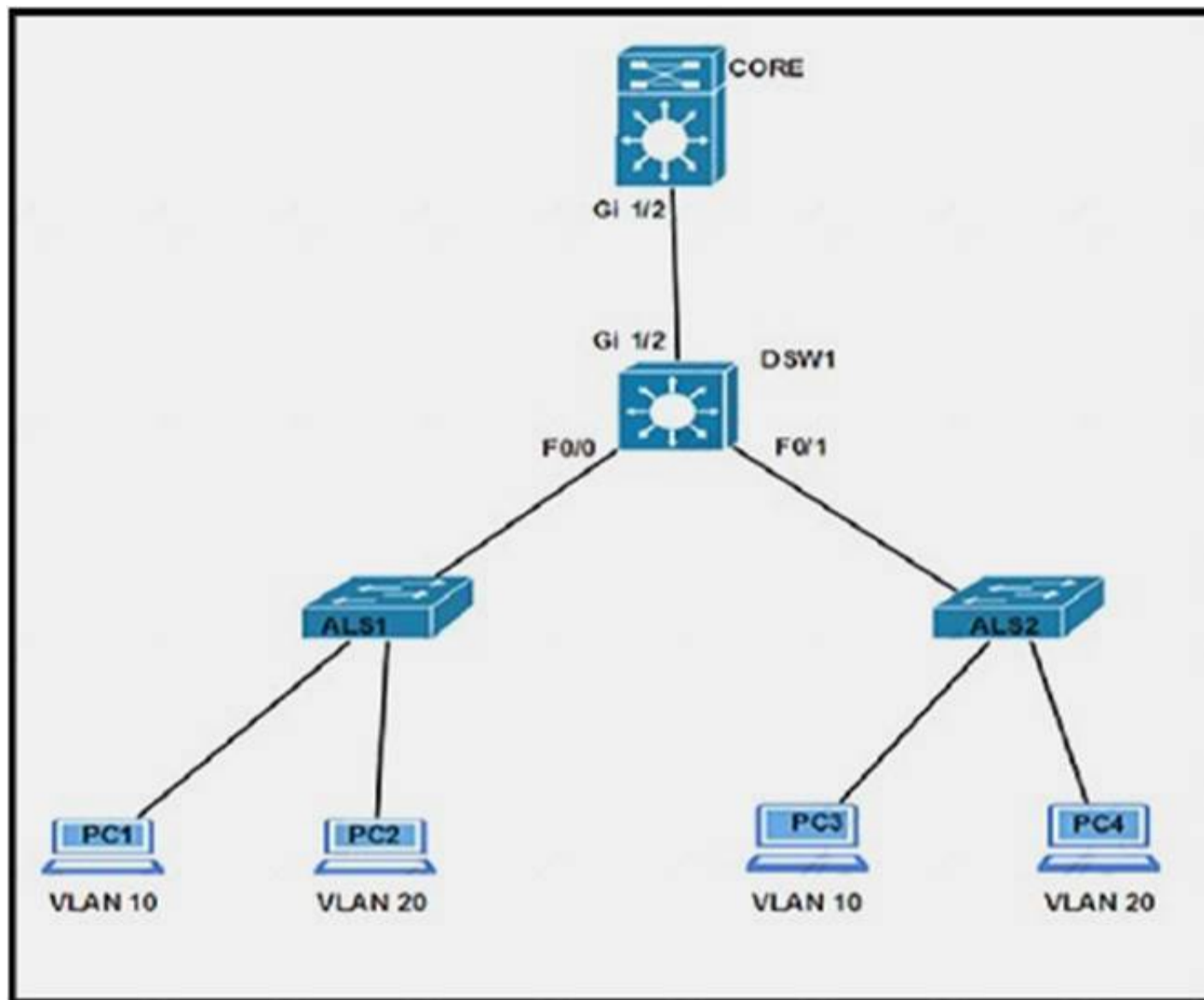
- A. transparent
- B. client
- C. server
- D. Extended VLANs are only supported in version 3 and not in versions 1 or 2.

**Answer: A**

**NEW QUESTION 7**

- (Exam Topic 2)

Refer to the exhibit.



Which configuration ensures that the Cisco Discovery Protocol packet update frequency sent from DSW1 to ALS1 is half of the default value?

- A. DSW1(config)#cdp timer 90
- B. DSW1(config-if)#cdp holdtime 60
- C. DSW1(config)#cdp timer 30
- D. DSW1(config)#cdp holdtime 90
- E. DSW1(config-if)#cdp holdtime 30
- F. DSW1(config-if)#cdp timer 60

Answer: C

**NEW QUESTION 8**

- (Exam Topic 3)

On which layer does IP source guard provide filtering to prevent a malicious host from impersonating the IP address of a legitimate host?

- A. Layer 1
- B. Layer 2
- C. Layer 3
- D. Layer 7

Answer: B

**NEW QUESTION 9**

- (Exam Topic 3)

Which option is a Cisco recommended RSPAN configuration practice?

- A. Define an RSPAN VLAN before configuring an RSPAN source or destination session.
- B. Use a different RSPAN VLAN for each session if configuring RSPAN on multiple switches.
- C. Assign access ports to an RSPAN VLAN like any other campus VLAN.
- D. Use only one destination port for each RSPAN session.

Answer: A

**NEW QUESTION 10**

- (Exam Topic 3)

Which two options are advantages of deploying VTPv3? (Choose two)

- A. It stores the VTP domain password securely as a SHA-1 hash
- B. It adds on FCS field at the end of each VTP frame for consistency checking
- C. It supports the propagation of private VLANs.
- D. It supports the use of AES to encrypt VTP messaging
- E. It can be configured to allow only one VTP server to make changes to the VTP domain

Answer: CE

#### NEW QUESTION 11

- (Exam Topic 3)

Which form of centralized device authentication allows each AAA feature to function separately?

- A. TACASS
- B. Kerberos
- C. local database
- D. RADIUS

**Answer:** A

#### NEW QUESTION 12

- (Exam Topic 3)

When a switch is added to a stack, which switch automatically configures the new switch with the correct IOS?

- A. master
- B. peer
- C. adjacent
- D. slave

**Answer:** A

#### NEW QUESTION 13

- (Exam Topic 3)

Which switchport feature will block the packet with unknown MAC address from sending it via port.

- A. switchport protect
- B. switchport block unicast
- C. switchport portfast
- D. packet with unknown MAC will be dropped

**Answer:** B

#### NEW QUESTION 14

- (Exam Topic 3)

The behavior of VLAN 1 BPDUs in a situation where the Native VLAN configured as VLAN 99 and the Native VLAN is Tagged?

- A. VLAN 1 STP BPDU tagged through VLAN 1
- B. VLAN 1 STP BPDU untagged through VLAN 1
- C. VLAN 1 STP BPDU tagged through VLAN 99
- D. VLAN 1 STP BPDU untagged through VLAN 99
- E. VLAN 1 STP BPDU tagged through VLAN 1 and 99
- F. VLAN 1 STP BPDU untagged through VLAN 1 and 99

**Answer:** AD

#### NEW QUESTION 15

- (Exam Topic 3)

Which Cisco Stack Wise feature is supported?

- A. using different versions of the Cisco IOS on each switch
- B. using different SDM templates on each switch
- C. using same software feature set on all members
- D. using mixed software feature set on all members

**Answer:** C

#### NEW QUESTION 16

- (Exam Topic 3)

Which information in a RADIUS access-request packet is encrypted?

- A. username and password
- B. entire header
- C. entire payload
- D. password

**Answer:** A

#### NEW QUESTION 17

- (Exam Topic 3)

In a switch stack environment, what is the total bidirectional traffic flow between two logical counter-rotating paths?

- A. 16 Gbps
- B. 32 Gbps
- C. 64 Gbps
- D. 128 Gbps

Answer: B

**NEW QUESTION 18**

- (Exam Topic 4)

Which two statements about the LACP port priority of a device are true? (Choose two.)

- A. To manually configure a link with an EtherChannel to come up first, set its lacp port-priority value lower than the default.
- B. It determines which links in an EtherChannel group are active.
- C. To manually configure uses the port a link within an EtherChannel to come up first, set its lacp port-priority value higher than the default.
- D. The system uses the port priority of the local and remote device to determine which links in an EtherChannel group are hot-standby.
- E. LACP port-priority is used in the hashing algorithm to load-balance links within an EtherChannel.
- F. They system uses the port priority of the local and remote devices to determine which links in an EtherChannel group are active.

Answer: AB

**NEW QUESTION 19**

- (Exam Topic 4)

Which AAA authorization type applies security policies on a per-user basis?

- A. network
- B. auth-proxy
- C. EXEC
- D. command

Answer: B

**NEW QUESTION 20**

- (Exam Topic 4)

ACisco Catalyst switch that is prone to reboots continues to rebuild the DHCP snooping database. What is the solution to avoid the snooping database from being rebuilt after every device reboot?

- A. ADHCP snooping database agent should be configured.
- B. Enable DHCP snooping for all VLANs that are associated with the switch.
- C. Disable Option 82 for DHCP data insertion.
- D. Use IP Source Guard to protect the DHCP binding table entries from being lost upon rebooting.
- E. Apply ip dhcp snooping trust on all interfaces with dynamic addresses.

Answer: A

**NEW QUESTION 21**

.....



## THANKS FOR TRYING THE DEMO OF OUR PRODUCT

Visit Our Site to Purchase the Full Set of Actual 300-115 Exam Questions With Answers.

We Also Provide Practice Exam Software That Simulates Real Exam Environment And Has Many Self-Assessment Features. Order the 300-115 Product From:

<https://www.2passeasy.com/dumps/300-115/>

### Money Back Guarantee

#### **300-115 Practice Exam Features:**

- \* 300-115 Questions and Answers Updated Frequently
- \* 300-115 Practice Questions Verified by Expert Senior Certified Staff
- \* 300-115 Most Realistic Questions that Guarantee you a Pass on Your FirstTry
- \* 300-115 Practice Test Questions in Multiple Choice Formats and Updatesfor 1 Year